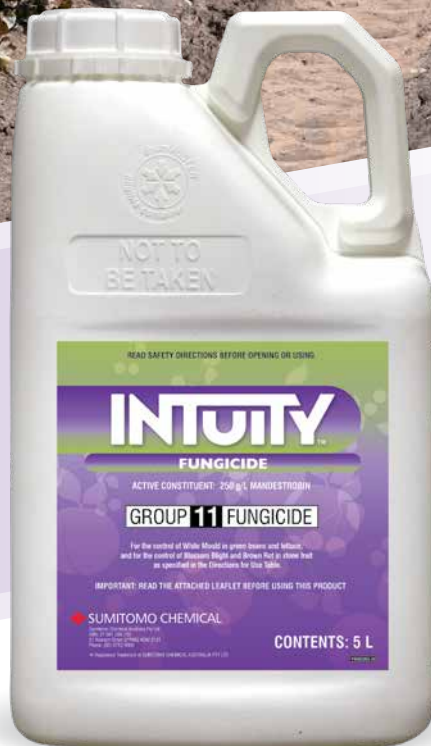


INTUITY™ FUNGICIDE

SAY **NO** TO
SCLERO



***Newly registered for the control of Sclerotinia (White Mould)
in green beans and lettuce***

Non scheduled SC formulation

Group 11 fungicide (Mandestrobin)

Patented latex formulation

Intuity is now registered to control *Sclerotinia* (White Mould) in green beans and lettuce.

- Active constituent: 250 g/L Mandestrobin
- Group 11 fungicide
- Non scheduled
- SC formulation
- Patented latex formulation

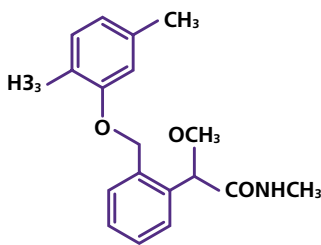
The active ingredient in Intuity is Mandestrobin. Mandestrobin is a novel fungicide from the Strobilurin family which has been commercially developed by Sumitomo Chemical Co. Ltd.



Sclerotinia in lettuce

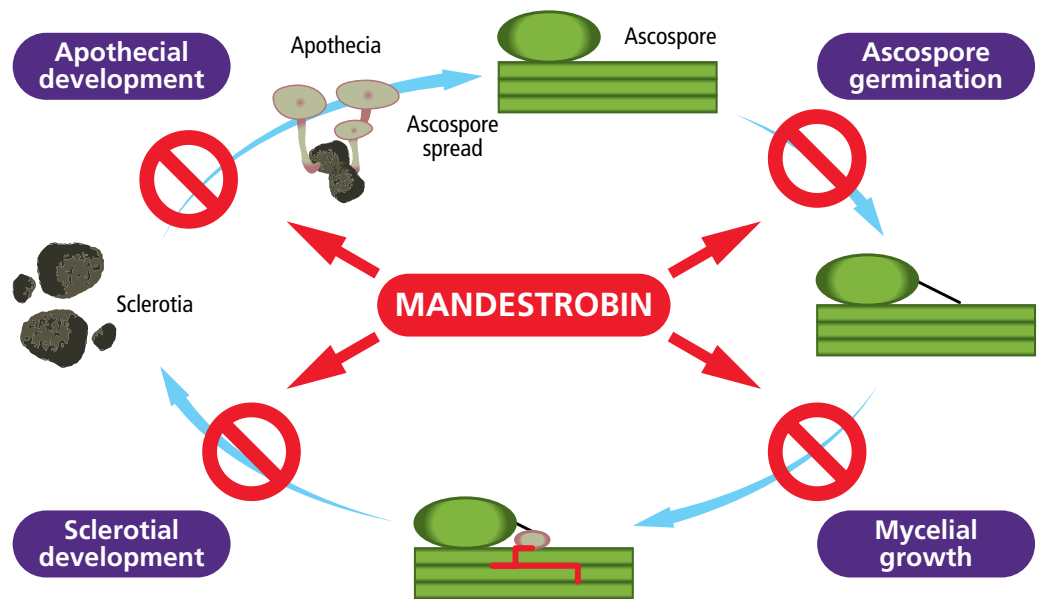
Mandestrobin

CHEMICAL STRUCTURE

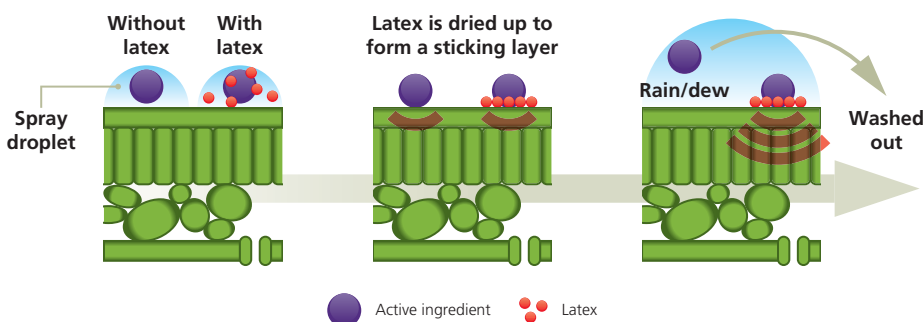


SCLEROTINIA LIFE CYCLE

Intuity has an effect on almost all stages of the life cycle of *Sclerotinia sclerotiorum* such as spore germination, mycelial growth, sclerotia production and apothecial development, and effects on *Sclerotinia sclerotiorum* can be expected with various timings in practical situations.



Patented latex formulation



The patented latex formulation of Intuity has been developed to aid with rainfastness. The 'latex adjuvant' helps to stick the active ingredient onto the plant meaning more of the active ingredient at the point of protection for a longer period.

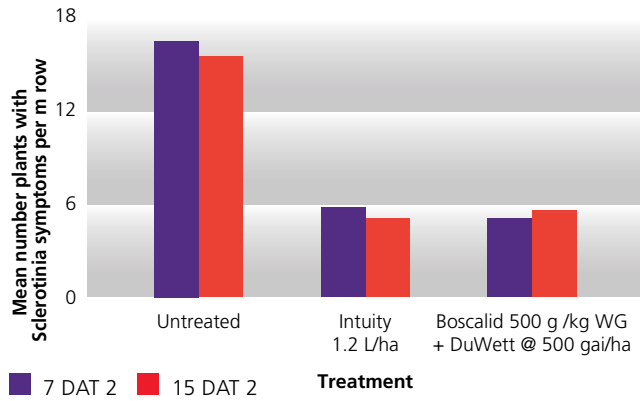
The benefits of the latex formulation, combined with the translaminar action of Intuity means that it performs when the pressure is on.

Trial results and field testing

SCLEROTINIA (WHITE MOULD) IN GREEN BEANS

For white mould control in green beans, apply Intuity at 20% flowering then again at full flowering when pods are starting to form. This is generally 7 to 10 days apart.

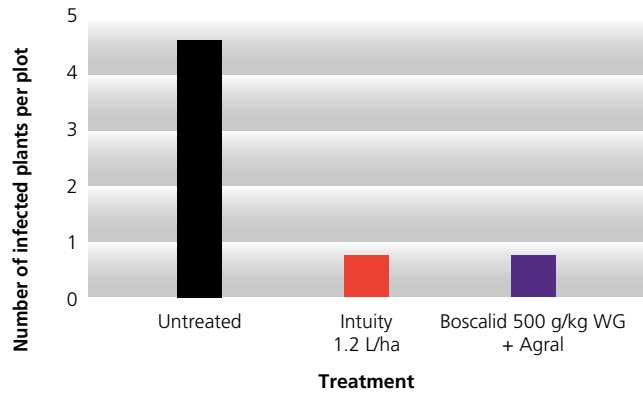
Trial on Sclerotinia in green beans Wivenhoe QLD



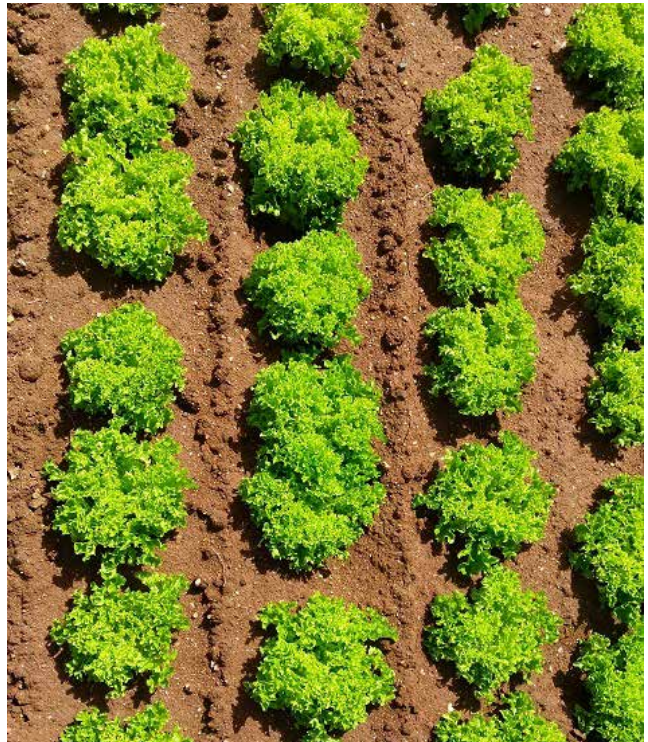
SCLEROTINIA (WHITE MOULD) IN LETTUCE

For white mould control in lettuce, begin application prior to disease development, after transplanting and continue with a 7-14 day interval between sprays. Use shorter interval when disease pressure is high.

Control of Sclerotinia in lettuce Bacchus Marsh VIC (9 DAT 5)



Untreated coral lettuce with Sclerotinia



Intuity treated coral lettuce

Directions for use

RESTRAINTS

DO NOT apply by aircraft.

CROP	DISEASE	RATE	CRITICAL COMMENTS
Green beans	White mould (<i>Sclerotinia sclerotiorum</i>)	1.2 L/ha	Apply at 20% flowering then again at full flowering when pods are starting to form. This is generally 7 to 10 days apart. Good coverage is important to get good control. Generally water rates of 400-500 L/ha should be used. DO NOT apply more than twice per crop. Under conditions of high pressure a third application may be required about 7 days later, but this should be a chemical from a different mode of action group. Concentrate spraying is not recommended.
Lettuce head and leaf varieties	White mould/ Lettuce drop (<i>Sclerotinia</i> sp.)	1.2 L/ha	For <i>Sclerotinia</i> control, begin application prior to disease development, after transplanting, and continue with a 7-14 day interval between sprays. Use a shorter interval when disease pressure is high. Good coverage is important to get good control. Generally, water rates of 300-600 L/ha should be used with the rate increasing as lettuce size increases. DO NOT apply more than two consecutive sprays or more than three times per crop. These sprays should be alternated with fungicides from a different mode of action group. DO NOT use in protected cropping situations. Concentrate spraying is not recommended.

WITHHOLDING PERIODS:

Green beans:

Harvest: DO NOT HARVEST FOR 7 DAYS AFTER APPLICATION

Grazing: DO NOT GRAZE OR CUT TREATED AREAS FOR STOCK FOOD FOR 7 DAYS AFTER APPLICATION

Lettuce: DO NOT HARVEST FOR 7 DAYS AFTER APPLICATION

Treated crops for export to particular destinations outside Australia may require a longer interval before harvest to comply with residues standards of importing countries. Please contact your industry body, exporter or Sumitomo Chemical Australia before using **INTUITY FUNGICIDE**.



For further information on Sumitomo Chemical products, please contact:

Patrick Press (QLD & N NSW)	0417 085 160
Andrew Franklin (FNQ)	0408 063 371
Phil Glover (N NSW)	0418 668 586
Charles McClintock (S NSW)	0429 004 290
Jack Bartels (E VIC & TAS)	0488 036 313
Imre Toth (WA)	0429 105 381
Frank Galluccio (W VIC & Sunraysia)	0418 502 466
Matthew Hincks (SA)	0409 807 301
Ardina Jackson (N NSW & S QLD)	0477 967 509

OR our Sydney office: (02) 8752 9000

© Registered trademark of Sumitomo Chemical Australia Pty Ltd.

INTUITY™

FUNGICIDE



Scan here to see more information about Sumitomo products

 **SUMITOMO CHEMICAL**

www.sumitomo-chem.com.au

ABN 21 081 096 255

Level 5, 51 Rawson Street EPPING NSW 2121
TEL: (02) 8752 9000 FAX: (02) 8752 9099