



Faster control. Longer protection.

Disease control in wheat and barley

Product Overview

METROPOL® is a broad-spectrum foliar fungicide for use in wheat and barley, providing quicker acting and longer lasting disease protection.

- Contains 200 g/L AZOXYSTROBIN plus 125 g/L FLUTRIAFOL
- Extended protection due to high azoxystrobin content and longer lasting triazole component
- Quick acting foliar protection due to highly systemic active constituents
- Highly effective, user friendly Suspension Concentrate (SC) formulation
- Optimised formulation with complimentary active ingredients
- Excellent crop safety – tested on multiple varieties and situations
- Dual modes of action for resistance management

Mode of Action

METROPOL is a combination of the strobilurin (Quinone outside Inhibitors – Qols) and triazole (demethylation-inhibitors – DMI) groups of fungicides and incorporates the strength of both of their modes of action.

The triazole (flutriafol) active ingredient in METROPOL has very quick movement within the plant and a strong ability to interrupt fungal growth in the plant tissue which provides fast acting, high level curative control.

The strobilurin (azoxystrobin) active ingredient in METROPOL provides excellent protectant activity and long persistence even at low concentrations. With label rates delivering high relative amounts of azoxystrobin active ingredient (80-100 g/ha), METROPOL offers a longer length of residual disease protection compared to similar alternatives.

The unique combination of active ingredients in METROPOL offers multi mode of action disease control with a fast activity and long length of protection.

Recommendations

WHEAT

Stripe Rust, Leaf Rust, Yellow Leaf Spot, Septoria Tritici Blotch and Powdery Mildew: **400 to 800 mL/ha.**

BARLEY

Spot form of Net Blotch: **800 mL/ha.**

Monitor wheat and barley crops regularly for symptoms of disease and apply METROPOL at the first sign of disease, particularly on the flag leaf and the first leaf below the flag leaf in wheat and the two leaves below the flag leaf in barley.

In crops where conditions favour continued disease development – including cereals planted into last year's cereal stubble – at least two fungicide applications may be necessary, potentially earlier in the crop life to control disease commencing lower in the crop canopy.

Spray Application Recommendations

METROPOL may be applied by boom spray or aircraft. Ensure that all leaves and stems are completely covered.

GROUND (BOOM) APPLICATION

Apply in 50 to 100 L water per hectare. The use of flat fan nozzles is recommended using a medium quality spray pattern, with pressures in the range 100 to 400 kPa.

AERIAL APPLICATION

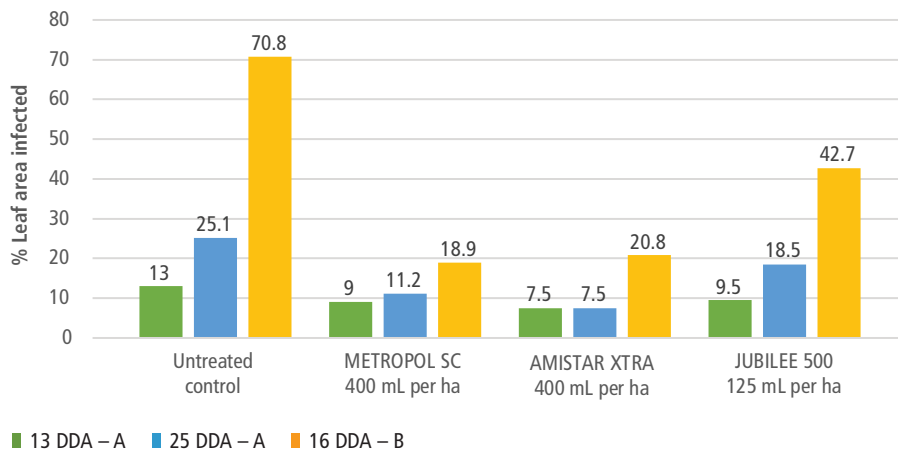
Apply using 20 to 30 L water using a medium quality spray. Use the lower rate when applications are made with a cross wind of not less than 5 knots. Use the higher specified rates when applying to dense crops.



Best results are achieved by applying fungicides like Metropol preventatively at the first sign of disease

METROPOL delivers outstanding performance on key diseases

Mean Severity of Stripe Rust (% Leaf Area Infected) on Wheat, Aria Park, New South Wales



Results of this trial clearly show that the level of stripe rust control delivered by METROPOL is at least equivalent to that of Amistar Xtra, a market standard.

Two applications were applied, application A on 18th September 2020 and application B on 13th October 2020

Features and Benefits

| FEATURES | BENEFITS |
|--|---|
| Mixture of highly active strobilurin and triazole active ingredients | Two modes of action for resistance management |
| More systemic versus other fungicides | Rapid movement within the plant quickly protects the crop |
| Excellent curative ability | Ability to cure disease that has already infected a crop and entered the latent period |
| Higher dose of Azoxystrobin per ha vs many alternatives | Ability to protect the plant for longer periods. Less need to retreat. Less damage and higher yield |
| Azoxystrobin greening effect | Ability to retain green leaf for longer, potentially resulting in higher yield. |
| Trusted active ingredients | Confidence product will control disease and maximise yield |

For further information on **Metropol**, please contact:

| | |
|--|----------------|
| Andrew Franklin (FNQ) | 0408 063 371 |
| Danita Clark (Central QLD) | 0447 000 622 |
| Patrick Press (SE QLD & NSW Northern Rivers) | 0417 085 160 |
| Ardina Jackson (NW NSW) | 0477 967 509 |
| Phil Glover (Central & Coastal NSW) | 0418 668 586 |
| Charles McClintock (S NSW) | 0429 004 290 |
| Frank Galluccio (NW VIC & Riverina) | 0418 502 466 |
| Jack Bartels (Eastern VIC & TAS) | 0488 036 313 |
| Matthew Hincks (SA) | 0409 807 301 |
| Imre Toth (WA) | 0429 105 381 |
| OR our Sydney office: | (02) 8752 9000 |



www.sumitomo-chem.com.au

ABN 21 081 096 255

Level 5, 51 Rawson Street
EPPING NSW 2121

TEL: (02) 8752 9000

FAX: (02) 8752 9099

Refer to label instructions for detailed recommendations.
Metropol SC Agricultural Fungicide is a registered Trademark of
Hanseandina Deutschland GmbH, Germany
Distributed by: SUMITOMO CHEMICAL AUSTRALIA PTY LTD