

Accede®

PLANT GROWTH REGULATOR

ACTIVE CONSTITUENT: 400 g/kg 1-AMINOCYCLOPROPANE-1-CARBOXYLIC ACID

For crop thinning in Apples, Nectarines, Peaches and Plums as per directions for use table.



GENERAL INSTRUCTIONS

Accede® Plant Growth Regulator contains 1-AMINOCYCLOPROPANE-1-CARBOXYLIC ACID (ACC), a natural compound responsible for the biosynthesis of ethylene production in tree fruits. It is ideal for thinning Apples, Nectarines, Peaches and Plums, reducing the need for hand thinning labour and improving fruit quality.

IMPORTANT FACTORS AFFECTING THINNING AND FRUIT SET

Many factors can influence plant stress level, flowering, fruit set or fruit maturation during the course of the season and therefore response to chemical thinners. For example (elevation, sun exposure, soil texture), tree size, root stock, growing conditions (prevailing or anticipated weather patterns such as high or low temperature extremes, chilling, drought or flood conditions, nutrient levels) or production practices (e.g. crop load, pruning severity, trunk girdling, root pruning). So these must all be carefully considered prior to using Accede®. Severe pruning which leaves mostly older wood to set fruit will be harder to thin with ACC. Hail nets may affect thinning effect due to reduction in solar radiation. Waterlogging in stone fruit triggers ethylene production in the tree which will cause fruit drop just as a late frost on fruitlets will do. Note that cool, overcast conditions after application will delay fruitlet growth and flower/fruitlet drop and so it may be necessary to wait an extra one or two weeks to see how much the Accede® has reduced fruit set before hand thinning. A proportion of the fruitlets will stop developing and these are ones that will eventually drop or can be taken off during hand thinning.

DO NOT apply fruit setting agents if using Accede® at flowering time.

Accede® is a precursor to ethylene and so varietal response may be different to other apple thinners such as NAA or 6BA. It is recommended that initial applications are on small trial sections in a block over one or two seasons to determine appropriate timing, rate and likely response before full block treatments are conducted.

WATER VOLUME AND SPRAYER SET UP

The amount of water applied per hectare and coverage is as important as the concentration applied. On tree crops, apply Accede® in just sufficient water to ensure that flowers and fruits, receive light to moderate coverage using calibrated spray equipment. Adjust water volumes based on plant size and spacing. It is not necessary to wet to the point of runoff. Since low water volumes can be used with Accede®, concentrate spraying is not needed. Over wetting, leading to spray drift and drip can lead to overthinning - particularly in the bottom of vase shaped trees.

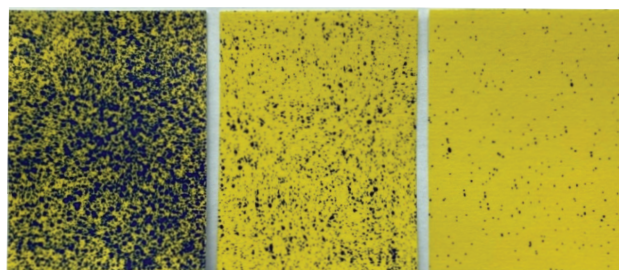
For higher density, single/dual leader, flat profile pruning systems and trees 2.5 - 4m in height; 500 – 750 L/ha is adequate at flowering; increasing to 750 – 1000 L/ha (apples only) when fruitlets are 20mm in size.

For larger vase shaped trees or Tatura trellis systems these rates can be increased by around 20% but then 80% of the spray should be directed into the upper 2/3rd of the tree canopy.

Accede® only has a thinning effect on the parts of the tree sprayed. **DO NOT** apply to parts of the tree that do not require thinning.

SPRAY COVERAGE

The picture below shows potential spray coverage. Whilst the coverage on the left card below may be ideal for a fungicide, ideal coverage for Accede® is shown on the middle card, with the coverage on the right card being too light.



Too high

Ideal coverage

Too low

MIXING

DO NOT pre-mix the required amount of Accede® with water as a concentrate in a small container before adding to the spray tank, as this can cause crystallization.

This product is suitable for application through conventional spray equipment calibrated to ensure thorough crop coverage.

Prepare spray solution by mixing the Accede® and non-ionic surfactant with water in a clean, empty spray tank. First nearly fill the spray tank before adding the required amount of Accede® and surfactant with the agitator running then complete filling the tank with water. Continue thorough agitation during spraying and after a stoppage.

Maintain the spray solution pH between 5 and 8.

Dispose of any unused spray material at the end of each day. **DO NOT** let prepared spray solution sit in spray tank overnight.

SURFACTANT

A tree-fruit safe non-ionic surfactant such as Pomade* at 50 mL/100L should be used with all Accede® applications.

DO NOT use higher rates of surfactant as this may increase the likelihood of phytotoxicity.

COMPATIBILITY WARNING

DO NOT tank mix Accede® with other products unless physical and performance compatibility has been verified.

RE-ENTRY

DO NOT enter treated areas until the spray has settled and dried, unless wearing cotton overalls buttoned to the neck and wrist (or equivalent clothing) and chemical resistant gloves. Clothing must be laundered after each day's use.

PROTECTION OF WILDLIFE, FISH, CRUSTACEANS AND ENVIRONMENT

Very toxic to aquatic life. **DO NOT** apply directly to water or to areas where surface water is present. **DO NOT** contaminate wetlands or watercourses with this product or used containers.

STORAGE AND DISPOSAL

Store in a locked room or place away from children, animals, food, feedstuffs, seed and fertilizers. Store in the closed original container in a cool, well-ventilated area. **DO NOT** store for prolonged periods in direct sunlight.

Triple-rinse containers before disposal. Add rinsings to spray tank. **DO NOT** dispose of undiluted chemicals on site. If recycling, replace cap and return clean containers to recycler or designated collection point. If not recycling, break, crush, or puncture and deliver empty packaging or unused product to an

approved waste management facility. If an approved waste management facility is not available, bury the empty packaging 500 mm below the surface in a disposal pit specifically marked and set up for this purpose, clear of waterways, desirable vegetation and tree roots, in compliance with relevant local, state or territory government regulations. **DO NOT** burn empty containers or product.

SAFETY DATA SHEET

Additional information is listed in the Safety Data Sheet (SDS) available from Sumitomo Chemical Pty Ltd.

SAFETY DIRECTIONS

When using together with other products, consult their label safety directions. When using the product wear cotton overalls buttoned to the neck and wrist (or equivalent clothing). Wash hands after use. After each day's use wash contaminated clothing.

FIRST AID

First aid is not generally required. If in doubt, contact a doctor or Poisons Information Centre (phone Australia 13 11 26, New Zealand 0800 764 766) or a doctor.

IMPORTANT NOTICE

These goods are to be used only for the purpose and as specified on the label and are not suitable for any other purpose. To the fullest extent permitted by law, we do not accept or bear any liability on any basis for any loss, damage, cost or expense, arising in any way, directly or indirectly, in connection with the goods.

APVMA Approval No: 94490/142575

® Registered Trademark of Valent BioSciences LLC

* Non Sumitomo Chemical Australia Pty Ltd Trademark.

© 2026

Sumitomo Chemical Australia Pty Ltd

ABN: 21 081 096 255

51 Rawson Street EPPING NSW 2121

Phone: (02) 8752 9000

In a Transport
Emergency
Dial 000
Police or Fire Brigade

SPECIALIST ADVICE
IN EMERGENCY ONLY ALL
HOURS - AUSTRALIA WIDE
1800 033 111



RESTRAINTS

DO NOT apply by aircraft

DO NOT apply Accede® through any type of irrigation system.

DO NOT apply if heavy rains or storms are forecast within 3 days.

DO NOT irrigate to the point of water runoff from the treatment area for at least 3 days after application.

DO NOT apply Accede® if frost is expected or has occurred within 2 days, or daytime maximum temperature is expected to be less than 10°C. For best results apply when daily temperatures range is between 5°C and 25°C.

DO NOT apply Accede® to injured or stressed plants or fruits e.g. drought/heat stress, waterlogging, freeze injury, girdled trees, etc.

DO NOT use overhead fans or irrigation equipment for at least 6 hours following Accede® application.

DO NOT apply to wet foliage, for example, early in the morning after a dew or soon after rain.

DO NOT apply Accede® if rain is expected within 6 hours of application. Light rain shortly after application may lead to rewetting and over thinning but heavy rain may lead to wash off and under thinning.

DO NOT apply Accede® within 2 days of spraying oil-based products or foliar fertilisers as may cause phytotoxicity.

DO NOT apply to trees younger than 4 years planted in the orchard as may cause phytotoxicity.

SPRAY DRIFT RESTRAINTS

Specific definitions for terms used in this section of the label can be found at apvma.gov.au/spraydrift

DO NOT allow bystanders to come into contact with the spray cloud.

DO NOT apply in a manner that may cause an unacceptable impact to native vegetation, agricultural crops, landscaped gardens and aquaculture production, or cause contamination of plant or livestock commodities, outside the application site from spray drift. The buffer zones in the relevant buffer zone table/s below provide guidance but may not be sufficient in all situations. Wherever possible, correctly use application equipment designed to reduce spray drift and apply when the wind direction is away from these sensitive areas.

DO NOT apply unless the wind speed is between 3 and 20 kilometres per hour at the application site during the time of application.

DO NOT apply if there are hazardous surface temperature inversion conditions present at the application site during the time of application. Surface temperature conditions exist most evenings one to two hours before sunset and persist until one to two hours after sunrise.

DO NOT apply by a vertical sprayer unless the following requirements are met:

- spray is not directed above the target canopy
- the outside of the sprayer is turned off when turning at the end of rows and when spraying the outer row on each side of the application site
- for dilute water rates up to the maximum listed for each type of canopy specified, minimum distances between the application site and downwind sensitive areas (see 'Mandatory downwind buffer zones' section of the following table titled 'Buffer zones for vertical sprayers') are observed.

Buffer zones for vertical sprayers

Type of target canopy	MANDATORY DOWNWIND BUFFER ZONES				
	Bystander areas	Natural aquatic areas	Pollinator areas	Vegetation areas	Livestock areas
2 metres tall and smaller, maximum dilute water rate of 1000 L/ha	0 m	5 m	0 m	10 m	0 m
taller than 2 metres (not fully-foliated), maximum dilute water rate of 1500 L/ha	0 m	20 m	0 m	35 m	0 m
taller than 2 metres (fully-foliated), maximum dilute water rate of 1500 L/ha	0 m	15 m	0 m	25 m	0 m

DIRECTIONS FOR USE:

Read the GENERAL INSTRUCTIONS section carefully before setting up to spray and deciding on a rate.

CROP	VARIETY	TIMING	RATE	CRITICAL COMMENTS
APPLES:				
<p>DO NOT apply during the heat of the day for the second application on Apple fruitlets. For best results in hot conditions, apply Accede® under slow drying conditions, e.g. early in the morning or at night in order to maximize absorption.</p> <p>DO NOT apply more than two applications of Accede® in Apples (Primary and/or secondary thinning) per season.</p>				
APPLE	Gala Royal Gala Jazz Envy and related varieties	Primary thinning at 80 – 100% flowering	Lighter setting warmer regions: 50 – 62.5 g/100 L (200 - 250 ppm) Heavy setting cooler regions - like Huon Valley Tasmania: 62.5 – 75 g/100 L (250 – 300 ppm)	<p>Accede® will thin when applied at any stage between 80% flowering and 25 mm fruitlet size so application timing can be adjusted to avoid poor weather.</p> <p>The rate to be used in <u>primary thinning</u> depends on how heavy the flowering is and the expected influence of factors affecting fruit set under GENERAL APPLICATION INSTRUCTIONS.</p> <p>The rate to be used in <u>secondary thinning</u> depends on the level of primary thinning achieved, the target fruit load and weather conditions. Because Accede® is active on larger sized fruitlets and primary thinning gives early size increase, wait until the effect of primary thinning is clear before deciding on the rate and using Accede® for secondary thinning. Use the higher rate for greater thinning effect. Generally, the later Accede® is applied the greater the thinning effect for a given concentration. If Accede® is used as a primary thinner this interval can vary from 3 - 4 weeks for Gala types to 5 – 6 weeks for Pink Lady. If shedding of large fruitlets is expected to cause damage to fruitlets lower in the tree, then the secondary thinner can be applied earlier - once fruitlets reach 15 mm.</p> <p>Application of Accede® as a secondary thinner at rates greater than 62.5 g/100 L (250 ppm), particularly in warmer conditions, may result in minor leaf yellowing and drop but has no long-term impact on yield or quality, however, consider reducing the concentration by 50 ppm or changing the day of application if temperatures are expected to exceed 30°C on the day of application.</p> <p>A tree-fruit safe non-ionic surfactant such as Pomade* at 50 mL/100L should be used with all Accede® applications.</p>
		Secondary thinning at 15 – 25 mm fruitlet size		
	Pink Lady Fuji	Primary thinning at 80 – 100% flowering	62.5 – 75 g/100 L (250 – 300 ppm)	
		Secondary thinning at 15 – 25 mm fruitlet size		
	Kanzi Golden Delicious Granny Smith (only when thinning required)	Primary thinning at 80 – 100% flowering	50 - 62.5 g/100 L (200 – 250 ppm)	
		Secondary thinning at 15 – 25 mm fruitlet size		

CROP	VARIETY	TIMING	RATE	CRITICAL COMMENTS
<p>NECTARINES, PEACHES AND PLUMS: DO NOT apply Accede® on Nectarines, Peaches and Plums that are light setting, set only at the tips of branches or biennial bearing (in an off year). DO NOT apply more than one application of Accede® in Nectarines, Peaches and Plums per season.</p>				
NECTARINE AND PEACH	Heavy setting varieties only	60 – 90% flowering	75 - 87.5 g/100 L (300 – 350 ppm)	<p>Application at higher rates after leaf emergence may lead to significant leaf yellowing and drop, so only one application at flowering is possible. It is important to carefully consider all factors mentioned under GENERAL INSTRUCTIONS that may affect pollination and fruit set before deciding on the rate and using Accede®.</p> <p>There are many varieties of Nectarines, Peaches and Plums, so it is important that initial applications are done to small trial sections in a block over one or two seasons starting with the lower rate, to determine appropriate timing, rate and likely response before full block treatments are conducted.</p> <p>Plums require good pollination with bees to get good fruit set. If this is unlikely to occur, then a lower rate of Accede® should be used.</p> <p>A tree-fruit safe non-ionic surfactant such as Pomade* at 50 mL/100L should be used with all Accede® applications.</p>
PLUM	Queen Garnett only		37.5 - 50 g/100 L (150 – 200 ppm)	

NOT TO BE USED FOR ANY PURPOSE OR IN ANY MANNER CONTRARY TO THIS LABEL UNLESS AUTHORISED UNDER APPROPRIATE LEGISLATION.

FOR VARIETIES NOT MENTIONED IN THE DIRECTIONS FOR USE CONTACT YOUR LOCAL SUMITOMO CHEMICAL REPRESENTATIVE FOR GUIDANCE

WITHHOLDING PERIOD:
NOT REQUIRED WHEN USED AS DIRECTED.